


■ Features

- ✚ Low price and high reliability
- ✚ AC input power suitable for the world
- ✚ High efficiency and low operation temperature
- ✚ Soft-start current can reduce the AC input impact effectively
- ✚ With Short-circuit and overload protection
- ✚ 100% full-load burning test
- ✚ Installed with EMI filter, minimum wave.
- ✚ 2 years warranty

■ Specification

Model	S-350-5	S-350-7.5	S-350-12	S-350-13.5	S-350-15	S-350-24	S-350-27	S-350-48
DC output voltage	3V	7.5V	12V	13.5V	15V	24V	27V	48V
Output voltage error (Note: 2)	±2%	±2%	±1%	±1%	±1%	±1%	±1%	±1%
Rated output current	50A	40A	29A	25.8A	23.2A	14.6A	13A	7.3A
Output current range	0-50A	0-40A	0-29A	0-25.8A	0-23.2A	0-14.6A	0-13A	0-7.3A
Wave and noise(Note : 3)	150mVp-p	150mVp-p	150mVp-p	150mVp-p	150mVp-p	150mVp-p	200mVp-p	240mVp-p
Inlet stability(Note : 4)	±0.5%	±0.5%	±0.5%	±0.5%	±0.5%	±0.5%	±0.5%	±0.5%
Load stability (Note : 5)	±1%	±1%	±0.5%	±0.5%	±0.5%	±0.5%	±0.5%	±0.5%
DC output power	250W	300W	348W	348.3W	348W	350.4W	351W	350.4W
Efficiency	73%	76%	74%	79%	78%	81%	82%	83%
Adjustable range for DC voltage	4.5-5.6V	6-9V	10-13.2V	12-15V	13.5-18V	20-26.4V	26-32V	41-56V
AC input voltage range	85~132VAC/180-264VAC selected by switch, 47-63Hz; 254-370VDC							
Input current	6.5A/115V 4A/230V							
AC Inrush current	25A/115V 50A/230V							
Leakage current	<3.5mA/240VAC							
Overload protection	105%~150% Tpye:pulsing hiccup shutdown Reset: auto recovery							
Over-voltage protection	5.75~6.75V	9.4~10.9V	13.8~16.2V	15.5~18.2V	18~21V	27.6~32.4V	33.7~39.2V	57.6~67.2V
High-temperature protection	ERH1>=65℃ Fan on, <=55℃ Fan off, >70℃,Cut off output(5~15) ERH1>=70℃ Fan on, <=65℃Fan off, >=80℃,Cut off output(24~48V)							
Temperature coefficient	±0.03%/℃(0~50%)							
Setup rise hold up time	200ms,100ms,20ms							
Vibration	10~500Hz,2G 10min,/1cycle,Period for 60min,each axes							
Withstand voltage	Input and output internal: 1.5KVAC,Input and enclosure: 1.5KVAC,Output and enclosure: 0.5KVAC							

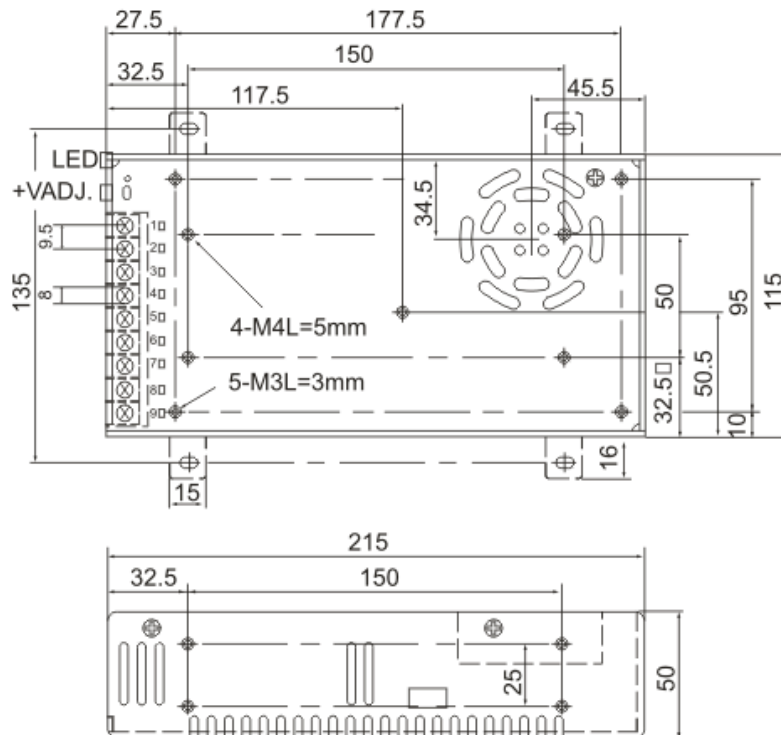
Isolation resistance	Input and output internal: Input and enclosure, Output and enclosure: 500VDC/100MΩ
Working temperature and humidity	-10℃~+60℃ (Refer to output derating curve) , 20%~90%RH
Store temperature and humidity	-20℃~+85℃,10%~95%RH
Overall dimension	215×115×50mm
Weight	1.15Kgs
Safety standards	Design refer to UL1950
EMC standards	Design refer FCC PART15 J Conduction class A

Note:

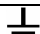
- 1.The testing condition for the parameter above is :230VAC input, rated load,25℃70% RH.Humidity.
2. Error. Include the setting error, line stability and load stability. (Note: 5).
- 3.Wave test: adopting "A12"double wire for 20MHz, and 0.1UF&47UF capacitor short-circuit for interrupting.
4. Inlet voltage stability test: when is over load, the lowest voltage of inlet is up to the highest voltage.
5. Load stability test: the load is from 0% to 100%.

■ **Shape and installation dimension**

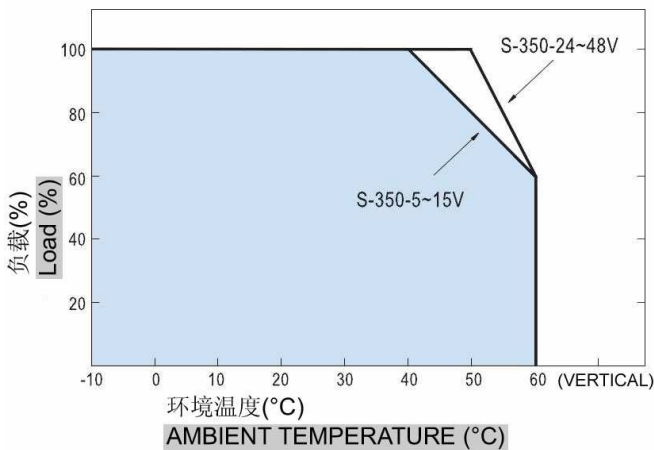
Unit: mm



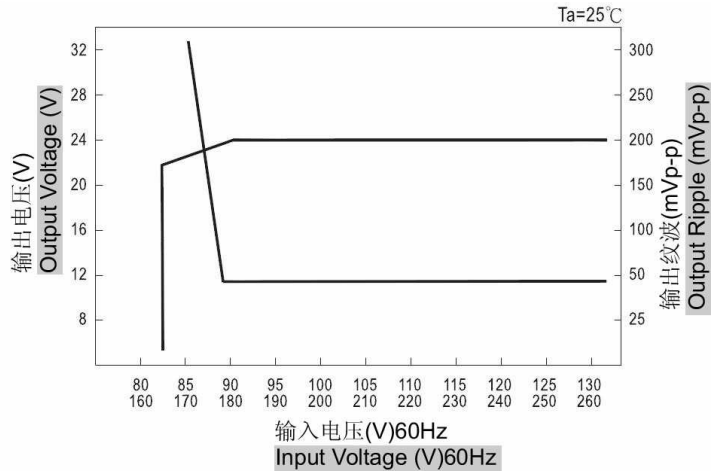
Terminal Pin No Assignment (9 point 9.5mm Pin)

Pin No.	Assignment	Pin No.	Assignment
1	AC INPUT/L	4.5.6	DC OUTPUT -V
2	AC INPUT/N	7.8.9	DC OUTPUT +V
3	FG 		

■ Load Derating Curve



■ Static Characteristics (24V)



■ Notice

1. Be sure to confirm the signification of sign above the pole before connection.

L: LINE (AC input) **N:** Neutral (AC input) **⏏(FG):** Protective Ground

-V (COM): DC output cathode

+V: DC output anode

VADJ: Output Voltage adjustment

2. Switch power supply can be used 110V and 220V AC power for input, The AC Voltage switch is in the top of the power supply sub-rack. Before plug in please check the voltage position is correct or not otherwise may take a permanent damage in this power supply.
3. Be sure to keep the ground wire connection, avoid electric shock and common mode interference or differential mode interference.

Shenzhen mulview technology limited is professional manufacturer developing Switching Power Supply, CCTV power supply and AC/DC Adapter. We can make OED/OEM.

Multiple view, more attention!

Mulview Technology Limited

<http://www.mtlcctv.com>

TEL: 0086-755-88849659

FAX: 0086-755-83722362

E-mail: mulviewcctv@gmail.com, sales@mtlcctv.com