



■ Features

- ✚ Low price and high reliability
- ✚ AC input power suitable for the world
- ✚ High efficiency and low operation temperature
- ✚ Soft-start current can reduce the AC input impact effectively
- ✚ With Short-circuit and overload protection
- ✚ 100% full-load burning test
- ✚ Installed with EMI filter, minimum wave.
- ✚ 2 years warranty

■ Specification

Model	S-300-12	S-300-13.5	S-300-15	S-300-24	S-300-27	S-300-48
DC output voltage	12V	13.5V	15V	24V	27V	48V
Output voltage error (Note: 2)	±1%	±1%	±1%	±1%	±1%	±1%
Rated output current	25A	22A	20A	12.5A	11A	6.5A
Output current rage	0-25A	0-22A	0-20A	0-12.5A	0-11A	0-6.5A
Wave and noise(Note : 3)	150mVp-p	150mVp-p	150mVp-p	150mVp-p	200mVp-p	240mVp-p
Inlet stability(Note : 4)	±0.5%	±0.5%	±0.5%	±0.5%	±0.5%	±0.5%
Load stability (Note : 5)	±0.5%	±0.5%	±0.5%	±0.5%	±0.5%	±0.5%
DC output power	300W	297W	300W	300W	297W	312W
Efficiency	80%	83%	84%	86%	86%	87%
Adjustable range for DC voltage	10-13.2V	12-15V	13.5-18V	20-26.4V	26-32V	41-56V
AC input voltage range	90~132VAC/180-264VAC selected by switch 47-63Hz; 254-370VDC					
Input current	6A/115V 3.5A/230V					
AC Inrush current	20A/115V 40A/230V					
Leakage current	<3.5mA/240VAC					
Overload protection	105%~150% Type: pulsing hiccup shutdown Reset: auto recovery					
Over-voltage protection	13.8~16.2V	15.5~18.2V	18~21V	27.6~32.4V	33.7~39.2V	57.6~67.2V
High-temperature protection	ERH1>=65℃ Fan on, <=55℃ Fan off, >70℃,Cut off output(5~15) ERH1>=70℃ Fan on, <=65℃Fan off, >=80℃,Cut off output(24~48V)					
Temperature coefficient	±0.03%/℃(0~50%)					
Setup rise hold up time	200ms,100ms,20ms					
Vibration	10~500Hz,2G 10min,/1cycle,Period for 60min,each axes					
Withstand voltage	Input and output internal: 1.5KVAC,Input and enclosure: 1.5KVAC,Output and enclosure: 0.5KVAC					

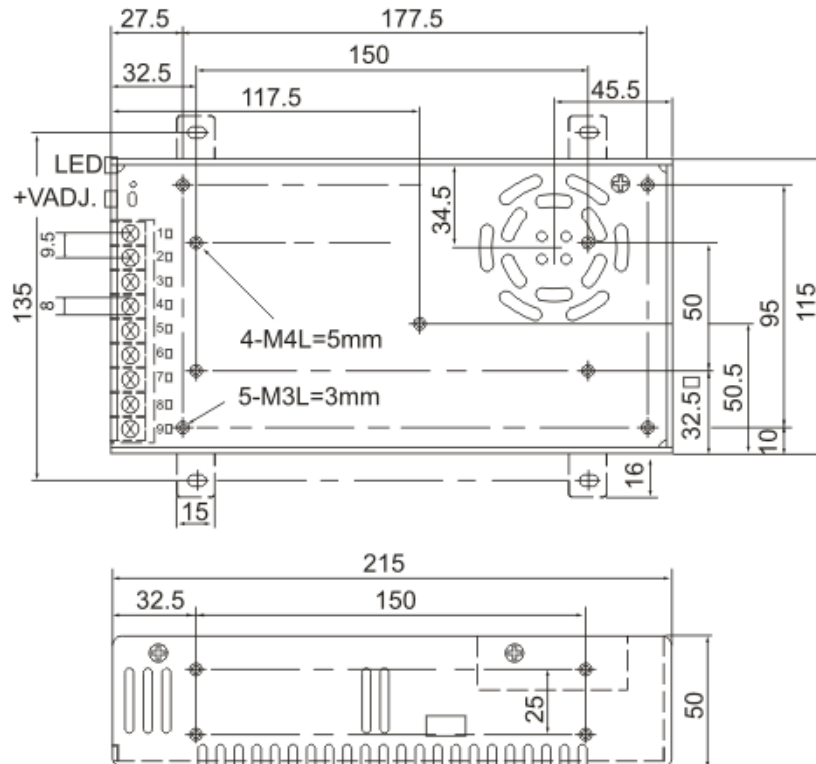
Isolation resistance	Input and output internal: Input and enclosure, Output and enclosure: 500VDC/100MΩ
Working temperature and humidity	-10℃~+60℃ (Refer to output derating curve) , 20%~90%RH
Store temperature and humidity	-20℃~+85℃,10%~95%RH
Overall dimension	215×115×50mm
Weight	1.15Kgs
Safety standards	Design refer to UL1950
EMC standards	Design refer FCC PART15 J Conduction class A

Note:

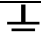
- 1.The testing condition for the parameter above is :230VAC input, rated load,25℃70% RH.Humidity.
2. Error. Include the setting error, line stability and load stability. (Note: 5).
- 3.Wave test: adopting "A12"double wire for 20MHz, and 0.1UF&47UF capacitor short-circuit for interrupting.
4. Inlet voltage stability test: when is over load, the lowest voltage of inlet is up to the highest voltage.
5. Load stability test: the load is from 0% to 100%.

■ Shape and installation dimension

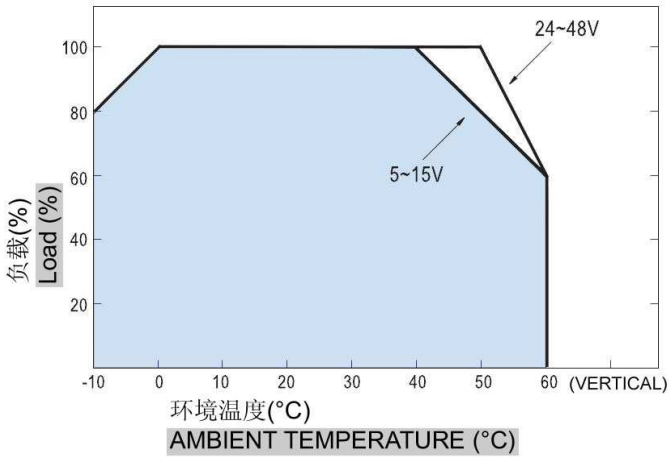
Unit: mm



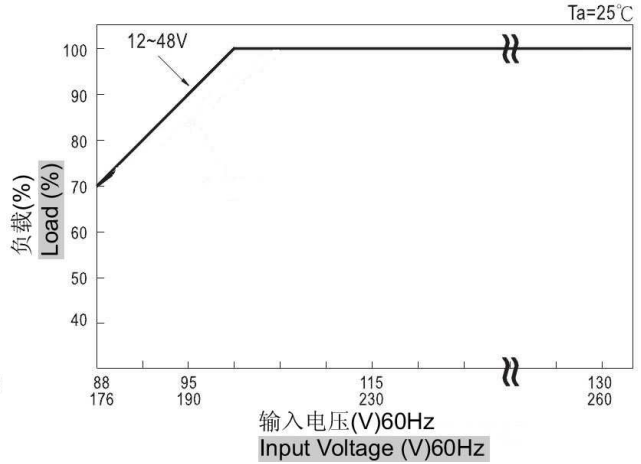
Terminal Pin No Assignment (9 point 9.5mm Pin)

Pin No.	Assignment	Pin No.	Assignment
1	AC INPUT/L	4.5.6	DC OUTPUT -V
2	AC INPUT/N	7.8.9	DC OUTPUT +V
3	FG 		

■ Load Derating Curve



■ Static Characteristics (24V)



■ Notice

1. Be sure to confirm the signification of sign above the pole before connection.

L: LINE (AC input) **N:** Neutral (AC input) **⏏ (FG):** Protective Ground

-V (COM): DC output cathode

+V: DC output anode

VADJ: Output Voltage adjustment

2. Switch power supply can be used 110V and 220V AC power for input, The AC Voltage switch is in the top of the power supply sub-rack. Before plug in please check the voltage position is correct or not otherwise may take a permanent damage in this power supply.
3. Be sure to keep the ground wire connection, avoid electric shock and common mode interference or differential mode interference.

Shenzhen mulview technology limited is professional manufacturer developing Switching Power Supply, CCTV power supply and AC/DC Adapter. We can make OED/OEM.

Multiple view, more attention!

Mulview Technology Limited

<http://www.mtlcctv.com>

TEL: 0086-755-88849659 FAX: 0086-755-83722362

E-mail: mulviewcctv@gmail.com, sales@mtlcctv.com