



■ Features

- ✚ Low price and high reliability
- ✚ AC input power suitable for the world
- ✚ High efficiency and low operation temperature
- ✚ Soft-start current can reduce the AC input impact effectively
- ✚ With Short-circuit and overload protection
- ✚ 100% full-load burning test
- ✚ Installed with EMI filter, minimum wave.
- ✚ 2 years warranty

■ Specification

Model	S-400-5	S-400-12	S-400-15	S-400-24	S-400-48
DC output voltage	5V	12V	15V	24V	48V
Output voltage error (Note: 2)	±2%	±1%	±1%	±1%	±1%
Rated output current	60A	33A	27A	17A	8.3A
Output current rage	0-60A	0-33A	0-27A	0-17A	0-8.3A
Wave and noise(Note : 3)	180mVp-p	180mVp-p	180mVp-p	180mVp-p	240mVp-p
Inlet stability(Note : 4)	±0.5%	±0.5%	±0.5%	±0.5%	±0.5%
Load stability (Note : 5)	±1%	±0.5%	±0.5%	±0.5%	±0.5%
DC output power	292W	380W	395W	400W	400W
Efficiency	73%	74%	78%	81%	83%
Adjustable range for DC voltage	4.5-5.6V	10-13.2V	13.5-18V	20-26.4V	41-56V
AC input voltage range	90~132VAC/180-264VAC 47-63Hz; 254-370VDC				
Input current	6.5A/115V 4A/230V				
AC Inrush current	25A/115V 50A/230V				
Leakage current	<3.5mA/240VAC				
Overload protection	105%~150% Tpye:pulsing hiccup shutdown Reset: auto recovery				
Over-voltage protection	5.75~6.75V	13.8~16.2V	18~21V	27.6~32.4V	57.6~67.2V
High-temperature protection	ERH1>=65℃ Fan on, <=55℃ Fan off, >70℃,Cut off output(5~15) ERH1>=70℃ Fan on, <=65℃Fan off, >=80℃,Cut off output(24~48V)				
Temperature coefficient	±0.03%/℃(0~50%)				
Setup rise hold up time	200ms,100ms,20ms				
Vibration	10~500Hz,2G 10min,/1cycle,Period for 60min,each axes				

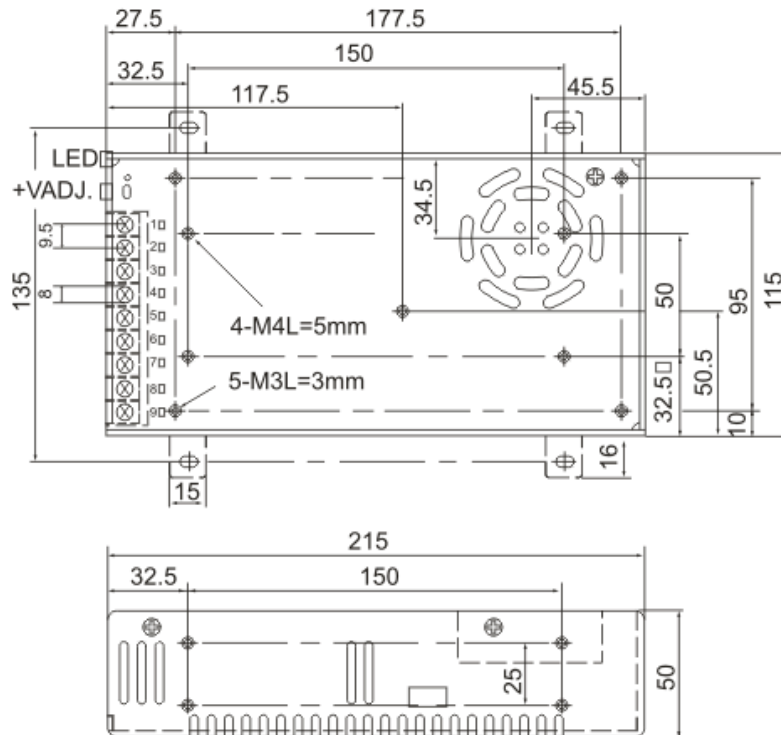
Withstand voltage	Input and output internal: 1.5KVAC,Input and enclosure: 1.5KVAC,Output and enclosure: 0.5KVAC
Isolation resistance	Input and output internal: Input and enclosure, Output and enclosure: 500VDC/100MΩ
Working temperature and humidity	-10℃~+60℃ (Refer to output derating curve) , 20%~90%RH
Store temperature and humidity	-20℃~+85℃,10%~95%RH
Overall dimension	215×115×50mm
Weight	1.2Kgs
Safety standards	Design refer to UL1950
EMC standards	Design refer FCC PART15 J Conduction class A

Note:

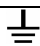
- 1.The testing condition for the parameter above is :230VAC input, rated load,25℃70% RH.Humidity.
2. Error. Include the setting error, line stability and load stability. (Note: 5).
- 3.Wave test: adopting "A12"double wire for 20MHz, and 0.1UF&47UF capacitor short-circuit for interrupting.
4. Inlet voltage stability test: when is over load, the lowest voltage of inlet is up to the highest voltage.
5. Load stability test: the load is from 0% to 100%.

■ **Shape and installation dimension**

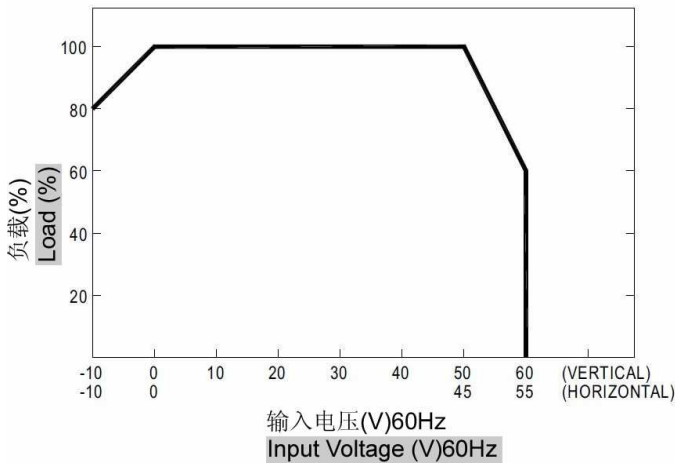
Unit: mm



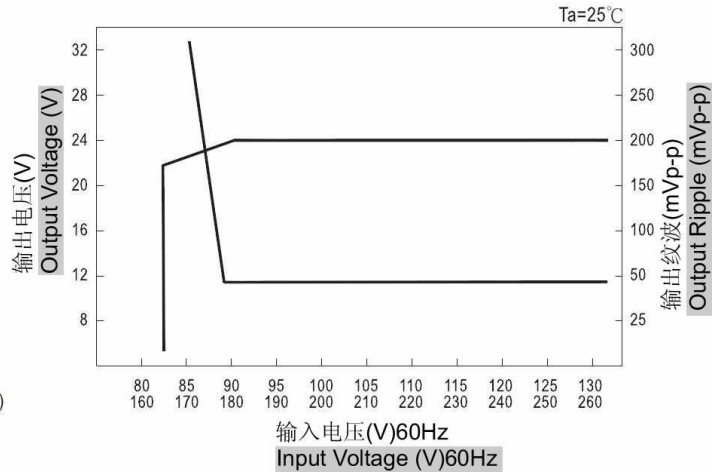
Terminal Pin No Assignment (9 point 9.5mm Pin)

Pin No.	Assignment	Pin No.	Assignment
1	AC INPUT/L	4.5.6	DC OUTPUT -V
2	AC INPUT/N	7.8.9	DC OUTPUT +V
3	FG 		

■ Load Derating Curve



■ Static Characteristics (24V)



■ Notice

1. Be sure to confirm the signification of sign above the pole before connection.

L: LINE (AC input) **N:** Neutral (AC input) **⏏(FG):** Protective Ground

-V (COM): DC output cathode

+V: DC output anode

VADJ: Output Voltage adjustment

2. Switch power supply can be used 110V and 220V AC power for input, The AC Voltage switch is in the top of the power supply sub-rack. Before plug in please check the voltage position is correct or not otherwise may take a permanent damage in this power supply.
3. Be sure to keep the ground wire connection, avoid electric shock and common mode interference or differential mode interference.

Shenzhen mulview technology limited is professional manufacturer developing Switching Power Supply, CCTV power supply and AC/DC Adapter. We can make OED/OEM.

Multiple view, more attention!

Mulview Technology Limited

<http://www.mtlcctv.com>

TEL: 0086-755-88849659

FAX: 0086-755-83722362

E-mail: mulviewcctv@gmail.com, sales@mtlcctv.com