

# 深圳市美乐唯科技有限公司

Shenzhen Mulview Technology Co.,limited

## *SPECIFICATION*

### *Desktop power adapter*

客 户:

CUSTOMER: \_\_\_\_\_

产品描述:

DESCRIPTION: Input:100~240V AC 50/60Hz Output:12VDC 3.0A

机种型号:

OUR MODEL NO: \_\_\_\_\_ S-35-12

样品编号:

日期:

SAMPLE NO: \_\_\_\_\_

DATE: \_\_\_\_\_

产品颜色:

SAMPLE COLOR:Black

White

Shenzhen Mulview Technology Co. Limited

Web: [www.mtlcctv.com](http://www.mtlcctv.com)

TEL:0086-755-88849659

FAX:0086-755-83722362

Mobile:0086-13760462930

Email: [Mulivewcctv@mtlcctv.com](mailto:Mulivewcctv@mtlcctv.com)

Skype:lancle0601

## 1、描述/ DESCRIPTION:

本规格书适用于 S-35-12 型号的开关电源.

The purpose of the document is to specify the functional requirements of a 36W switching power supply.

## 2、输入特性/INPUT CHARACTERISTICS:

### 2.1 输入电压/Input Voltage:

额定电压/Rated Voltage:100~240Vac

调整范围/Variation Range:90-264Vac

### 2.2 输入频率/Input Frequency:

额定频率/ Rated Frequency: 50/60Hz.

调整频率/Variation Frequency:47-63Hz

### 2.3 输入电流/Input Current:

当输入交流电压为额定值的下限电压负载满载时,最大输入交流电流 1.6A.

1.6Amps max At any input voltage and rated, DC output rated load.

### 2.4 浪涌电流/Inrush Current:

当输出为额定负载,环境温度为 25℃,输入 240Vac 冷态起机时的最大浪涌电流小于 120A.

120 Amps Max. Cold start at 240Vac input, with rated load and 25℃ ambient.

### 2.5 AC 漏电流/Ac Leakage Current:

当输入电压 240Vac 时,最大漏电流为 0.25mA.

0.25mA Max.At240Vac input.

### 3、输出特性/OUTPUT CHARACTERISTICS:

#### 3.1 输出功率/Power output

电压 Voltage	最小负载 Min. Load	额定负载 Rated. Load	峰值功率 Peak	输出功率 Output power
12Vdc	0.01A	3.0A		36W

#### 3.2 负载特性,调整率/Combined Load/Line Regulation

电压 Voltage	最小负载 Min. Load	额定负载 Rated. Load	线性调整 Line Regulation	负载调整 Load Regulation
12Vdc	0.01A	3.0A	±1%	±5%

#### 3.3 纹波和噪音 Ripple and Noise:

测试条件:在额定电压及额定负载条件下,使用示波器带宽为 20MHz 连接到充电器的输出端,同时输出端并联一个 47uF 的电解电容和一个 0.1uF 的瓷片电容.

Under nominal voltage and nominal load,the ripple and noise are as follows when measure with Max.Bandwidth of 20MHz and Parallel 47uF/0.1uF,crossed connected at testing point.

电压 Voltage	最大纹波/最大噪音 Ripple and Noise(Max.)
<u>+12Vdc</u>	<u>120mV p-p</u>

#### 3.4 启动延迟时间/Turn on delay time:

当输入 115Vac 和输出最大负载时,最大启动时间为 3S.  
3Second Max.at 115Vac input and output Max.load.

#### 3.5 上升时间/Rise time:

当输入 115Vac 和输出最大负载时最大时间为 40 mS.  
40 mS Max.at 115Vac input and output Max load.

#### 3.6 保持时间/Hold up time:

当输入 115Vac 和输出最大负载时,最小保持时间为 5 mS .  
5 mS Min.at 115Vac input and output Max.Load.

#### 3.7 效率/Efficiency:

当 115/230Vac 输入电压时, 1/4, 1/2, 3/4 和满载计算平均效率, 最小 78%。

78% Min, At 115/230Vac input voltage,1/4, 1/2, 3/4 and full load calculation average efficiency.

7、 结构参数/MECHANICAL REQUIREMENT:

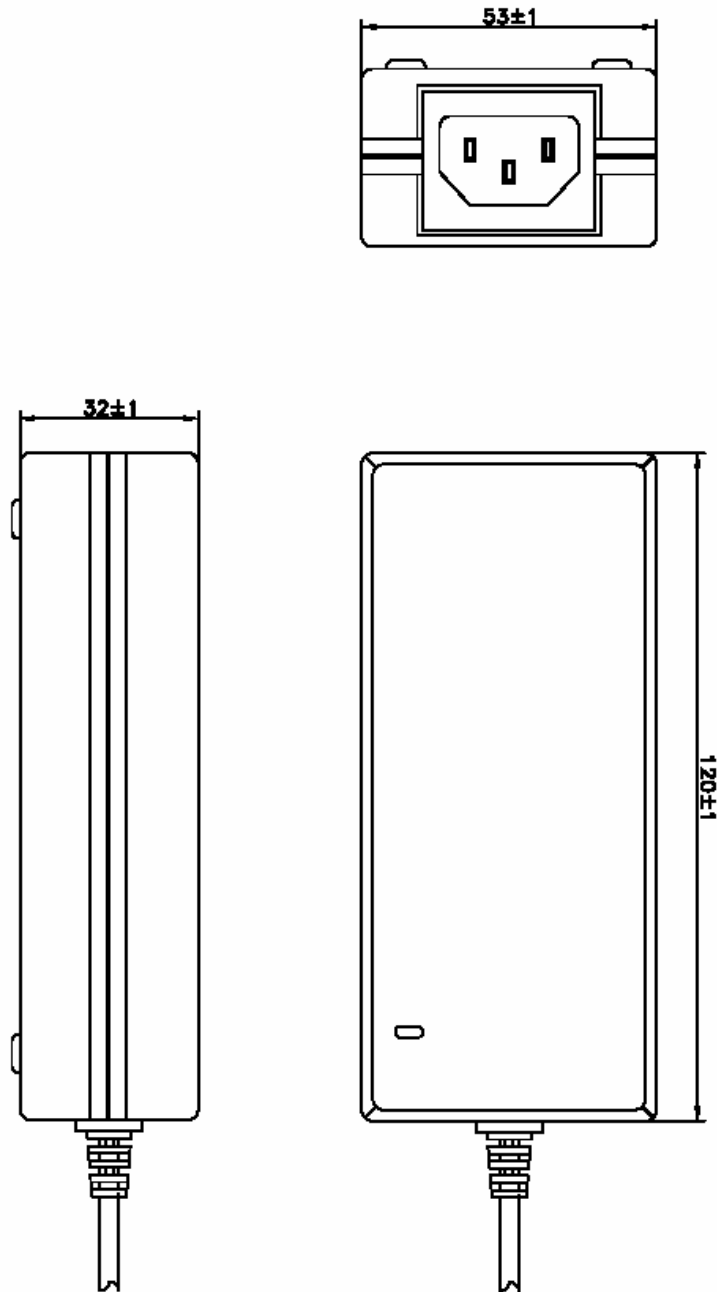
7.1 外壳/Enclosure:

外壳尺寸: L120 x W53 x H32mm;

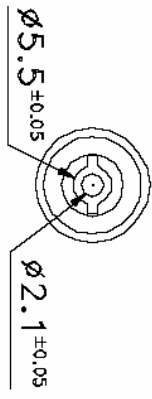
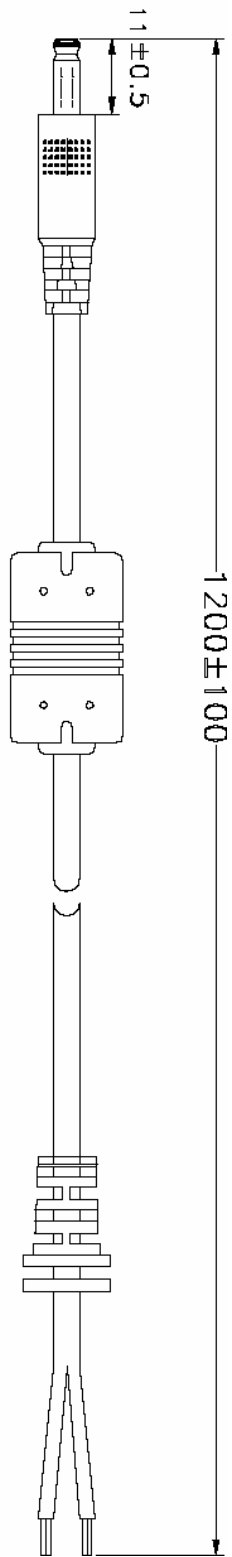
The power supply size: L120 x W53 x H32mm;

7.2 输入线/Input Connector:

IEC-320-C14.



## 8、CORD/线材



备注:

1. 线材规格: 2725\*2S L:1.2M
2. PULG: 5.5\*2.1\*11 音叉叉沟 (镀镍黑胶)